

Aqua Soft Water



The Product you can TRUST

- ▶ Most Affordable
- ▶ Easy Installation
- ▶ No Power Consumption
- ▶ No Salt Usage
- ▶ No Plumbing
- ▶ No Manpower
- ▶ No Maintenance
- ▶ No Operating Costs
- ▶ No Wastages of Water



ISO 9001:2015 Certified Co.

Shivam Aqua

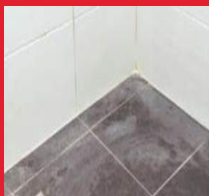
Absolute Water Solution...

Aqua Soft Water

The Product you can TRUST

HARD WATER

Hard water is water with excessive amount of Calcium & Magnesium minerals present in the form of dissolved carbonates, sulphates or hydroxides. Scale is basically deposits of carbonates which is destructive and detrimental to household plumbing and prematurely ruins appliances like laundry machines and water geysers. Scale can lower water pressure, restrict flow rates and even completely prevent water from flowing through pipes. Laundry washed in hard water becomes stiff with dingy colouration. Dishes are foggy and streaked with soap spots on washing with hard water. As a thumb rule, just 1mm of scale on heating coils of heaters, increases the cost by 15%



Aqua Soft Water

is a salt-free water softener that conditions that magnesium and calcium minerals prevalent in hard water. Aqua Soft chemically alters the structure of the Ca^{+2} and Mg^{+2} ions by sequestering process, such that the soluble carbonates become insoluble and stay suspended in the solution. These carbonates cannot precipitate out of water to attached to the surfaces of water distribution systems and water heaters, thus preventing scale build-ups.



INSTALLATION

Installation is very simple, just tie the rope from the softener to the top of the overhead/underground tank such that it is fully immersed in the water. Fit & Forget.

TEST

To test the performance of the product, at any point of time, take two equal measures of samples- one from the borewell water inlet and other from the overhead tank where the product is installed. Boil both the samples for about 10-15 minutes and let the liquid cool down for 10-15 minutes. Notice the suspended solids and colloidal particles in borewell water- which indicates level of scaling is high. The sample with the product water shall be relatively clearer and translucent- which indicates level of scaling is very low

This test proves that on using the product, the hardness of water does not form scaling in the water distribution systems and appliances of the house

Bore Well Water

(Full scaling observed after boiling for 10 minutes)



Aqua Soft Water

(No scaling observed after boiling for 10 minutes)



Aqua Soft Water



The Product you can TRUST

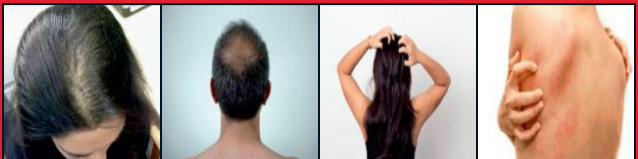
FUNCTIONS

For Homes

- Prevents Scaling & Corrosion in pipes/tiles
- Prevents Scale build-up inside water geysers
- Better & Quicker heating in water heaters
- Better Looking spouts/basin mixers
- Protects Basin/Sinks from hardness stains
- Longer Life of washing machines, water geysers and dish washers
- Enhanced Washing of laundry
- Removes existing scale gradually
- No Drop in pressure/flow rate of water in pipes
- Energy Savings in water distribution
- Cost Savings in power, repairs maintenance and replacement of appliances

For People

- Protects from dry scalp, hair thinning and hair fall
- Protects from itchy and dry skin
- Retains necessary minerals in water which are good for human health
- Retains taste, colour and odour of original water
- No blood pressure concerns as Sodium (Na) is not added
- Safe for domestic consumption



ISO 9001:2015 Certified Co.

Shivam Aqua

Absolute Water Solution...

*Visit for
Quality*



9825207993



info.shivamaqua@gmail.com



G-11, EVA-1, Opp. Jogger's Park,
Attabhai Chowk, Bhavnagar.

